



Axiom Hydraulics

2025

Product Catalogue



**Black
Bruin**



Axiom Hydraulics Design House – where ideas become reality

At Axiom Hydraulics, our Design House is the heart of innovation, expertise and precision. This dynamic hub is powered by a team of highly skilled professionals comprised of mechanical and electrical engineers, draftsmen, and other technically adept specialists. With over 150 years of combined experience, this problem-solving powerhouse tackles challenges of any scale, delivering hydraulic solutions with precision and efficiency.

Our team's technical expertise extends beyond design. From initial concept to after-sales support, we are committed to ensuring seamless functionality. Whether troubleshooting critical errors or assisting with system optimization, our experts are always on hand to support every client—big or small. We are passionate about what we do, and that passion drives our dedication to providing world-class service to all our clients.

Using the latest design software, we create system solutions tailored to meet diverse requirements. We pride ourselves on being highly efficient without compromising quality.

Key Capabilities:

- Comprehensive design of complete hydraulic systems
- Custom integrated manifold designs
- Agile design processes with fast lead times
- Dedicated after-sales/project technical support

No challenge is too complex, no detail too small—at Axiom Hydraulics, we bring your ideas to life with expertise, care, and a commitment to excellence.

SITE 2: WORKSHOP & STORES

At Axiom Hydraulics, our Workshop and Stores Team operates as a specialized arm of the company, distinct from our design and production capabilities. This team is dedicated to the repair, reconditioning, and servicing of hydraulic equipment, ensuring our customers receive unmatched support throughout the life-cycle of their systems. Our highly skilled team are able to customize hydraulic systems and products to meet the unique demands of specific applications. By modifying components and configurations, we can deliver tailored solutions that enhance performance, efficiency, and reliability for even the most specialized requirements.

With over 65 years of operational experience, our team of highly trained machinists, fitters, and cutting-edge machinery, perform OEM-specified servicing and repairs to the highest standards.

Our 5,500 m² workshop is meticulously designed to minimize contamination of exposed components, delivering exceptional quality control. No hydraulic component leaves our facility without comprehensive performance and safety testing. Every completed unit undergoes stringent load simulations on our test benches to ensure smooth, efficient, and reliable operation.

In addition, we maintain substantial stock-holding of parts and spares to support our entire hydraulic equipment portfolio, ensuring that our clients' needs are met quickly and efficiently.

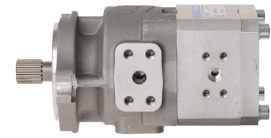


Eckerle's gap compensated high pressure internal gear pumps have been especially developed to suit the mobile, industrial, and automotive sectors. They impress with their exceptionally low noise, ease of combination to create multiple pumps, long service life and ability to withstand peak pressures of up to 400 bar even at low input RPM.

EIPC INDUSTRIAL PUMPS WITH ALUMINIUM HOUSING

Performance | EIPC3/EIPC5/EIPC6

- sizes 3-6
- nominal sizes 20-250 cm³/ U
- permanent operating pressure up to 250 bar
- peak operating pressure up to 320 bar



Industrial Pump

EIPH INTERNAL GEAR HIGH PRESSURE PUMP

Performance | EIPH2

- sizes 004 - 025
- Spec. volume [cm³/rev] 4.2 - 24.8
- continuous operating pressure up to 330 bar
- peak operating pressure up to 350 bar

Performance | EIPH3

- sizes 014 - 064
- Spec. volume [cm³/rev] 14.3 - 65.3
- continuous operating pressure up to 330 bar
- peak operating pressure up to 350 bar

Performance | EIPH5

- sizes 040 - 100
- Spec. volume [cm³/rev] 40.2 - 100.5
- continuous operating pressure up to 300 bar
- peak operating pressure up to 330 bar

Performance | EIPH6

- sizes 040 - 250
- Spec. volume [cm³/rev] 40.8 - 249.9
- continuous operating pressure up to 330 bar
- peak operating pressure up to 340 bar

EIPQ INTERNAL GEAR REVERSING PUMP

Performance | EIPQ0

- sizes 060 & 100
- Spec. volume [cm³/rev] 0.6 - 1.0
- continuous operating pressure up to 250 bar
- peak operating pressure up to 280 bar

Performance | EIPQ1

- sizes 016 - 032
- Spec. volume [cm³/rev] 1.6 - 3.2
- continuous operating pressure up to 250 bar
- peak operating pressure up to 280 bar

Performance | EIPQ2

- sizes 005 - 013
- Spec. volume [cm³/rev] 5.4 - 13.3
- continuous operating pressure up to 250 bar
- peak operating pressure up to 280 bar

Performance | EIPQ3

- sizes 016 - 025
- Spec. volume [cm³/rev] 15.8 - 24.5
- continuous operating pressure up to 250 bar
- peak operating pressure up to 280 bar

Performance | EIPQ5

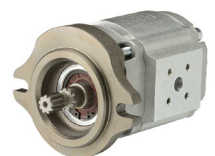
- sizes 032 & 040
- Spec. volume [cm³/rev] 32.7 - 40.2
- continuous operating pressure up to 250 bar
- peak operating pressure up to 280 bar



High Pressure Pump



Reversing Pump



Segmental Pump

EIPS SEGMENT PUMP

Performance | EIPS1

- sizes 016 - 050
- Spec. volume [cm³/rev] 1.6 - 5.0
- continuous operating pressure up to 300 bar
- peak operating pressure up to 320 bar

Performance | EIPS2

- sizes 005 - 025
- Spec. volume [cm³/rev] 5.4 - 24.8
- continuous operating pressure up to 250 bar
- peak operating pressure up to 320 bar



Axiom Hydraulics

AXIOM HYDRAULICS (PTY) LTD

011 334 3068/86

info@axiom.org.za

www.axiomsa.co.za

**Cnr Bergvlei & Stellenberg Roads
Wadeville
Germiston**



**Black
Bruin**

